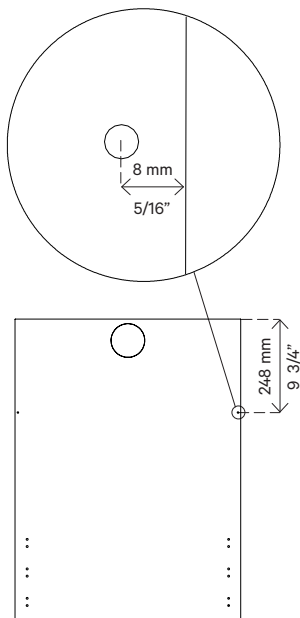


# INSTALLATION GUIDE

## STABILIZING MAGNET FOR TALL DRAWER FRONTS

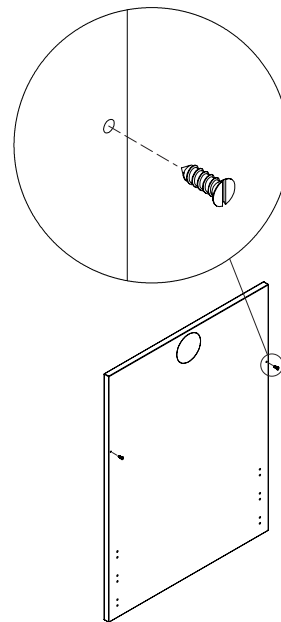


UNI-P-ACC02-MIS180



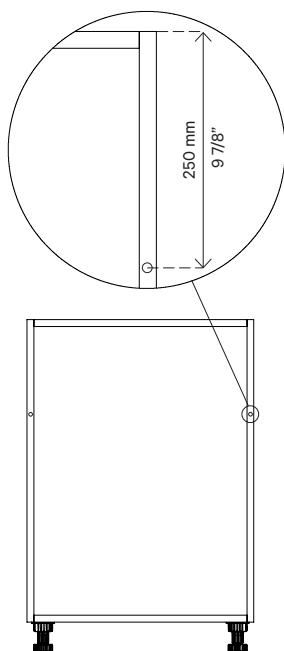
1

Mark the position of the drillings on the back side of the drawer front.  
Drill 12 mm / 1/2" deep holes using a 2 mm / 1/16" drill bit.



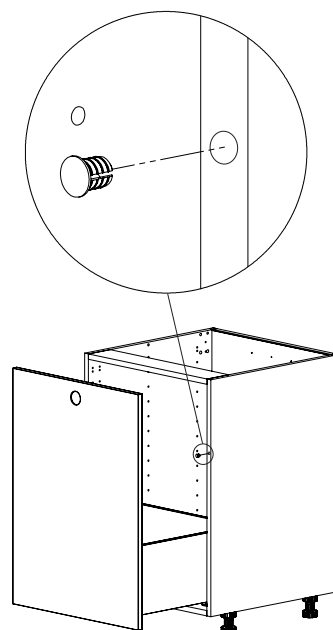
2

Fasten the wood screws into the predrilled holes. The screw head must not penetrate further than the surface of the drawer front.



3

Mark the drilling positions as shown above. Drill 13 mm / 1/2" deep holes using a 8 mm / 5/16" drill bit. Make sure the holes are centered between the edges of the cabinet sides.



4

Press in the magnet.